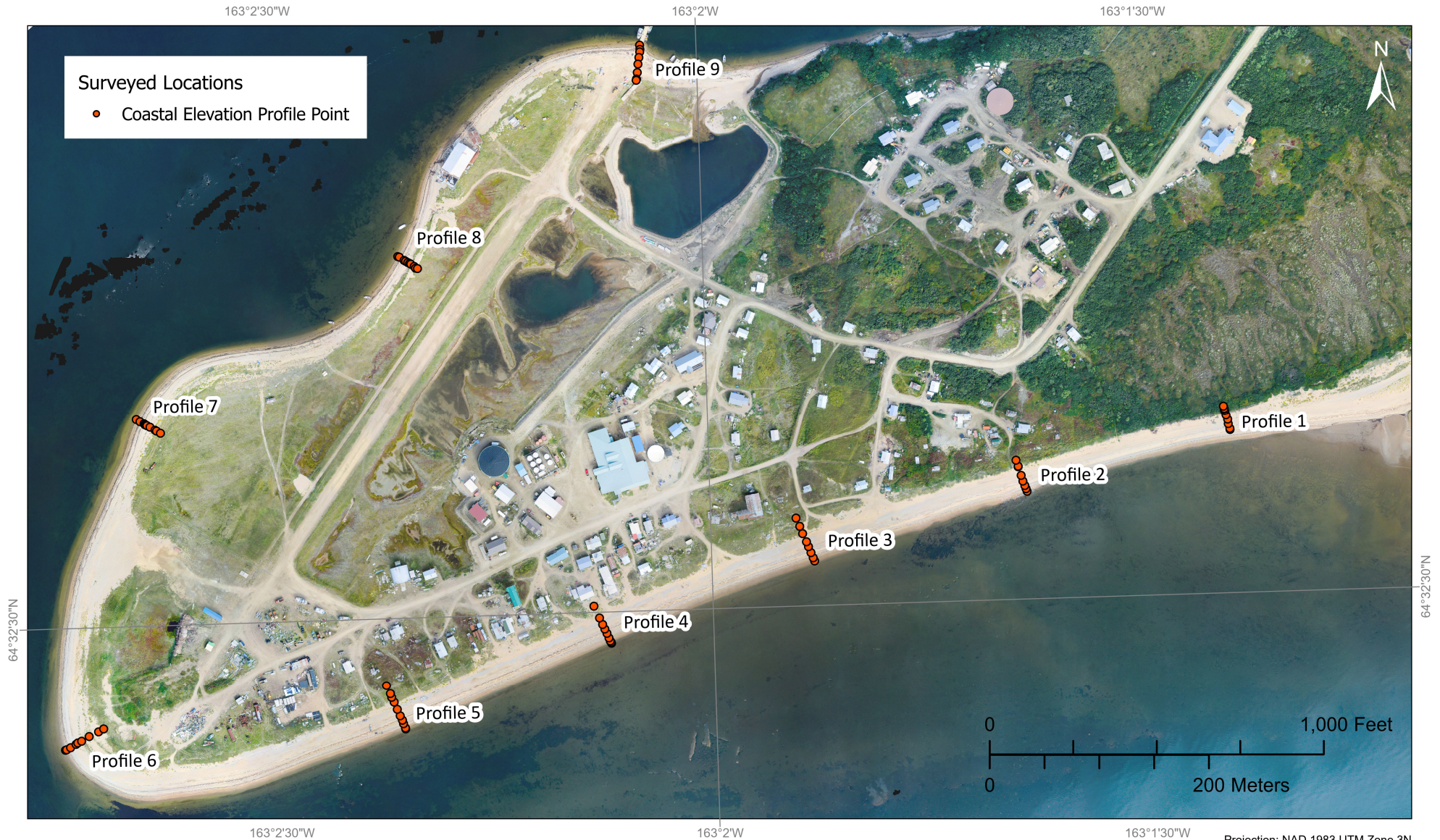


Erosion Monitoring Site Golovin, Alaska

LAST UPDATED 2020



STATE OF ALASKA
DEPARTMENT OF NATURAL RESOURCES
DIVISION OF GEOLOGICAL & GEOPHYSICAL SURVEYS

The State of Alaska makes no expressed or implied warranties (including warranties for merchantability and fitness) with respect to the character, functions, or capabilities of the electronic data or products or their appropriateness for any user's purposes. In no event will the State of Alaska be liable for any incidental, indirect, special, consequential, or other damages suffered by the user or any other person or entity whether from the use of the electronic services or products or any failure thereof or otherwise. In no event will the State of Alaska's liability to the Requestor or anyone else exceed the fee paid for the electronic service or product.
website: dggg.alaska.gov

DGGS conducts baseline assessments of flooding and erosion in collaboration with Alaska communities. Coastal monitoring at Golovin is done through re-measurement of coastal elevation profiles around the Golovin Spit which was initiated in 2011 through the Coastal Impact Assistance Program. DGGS works with the Chink Eskimo Community to continue monitoring activities.