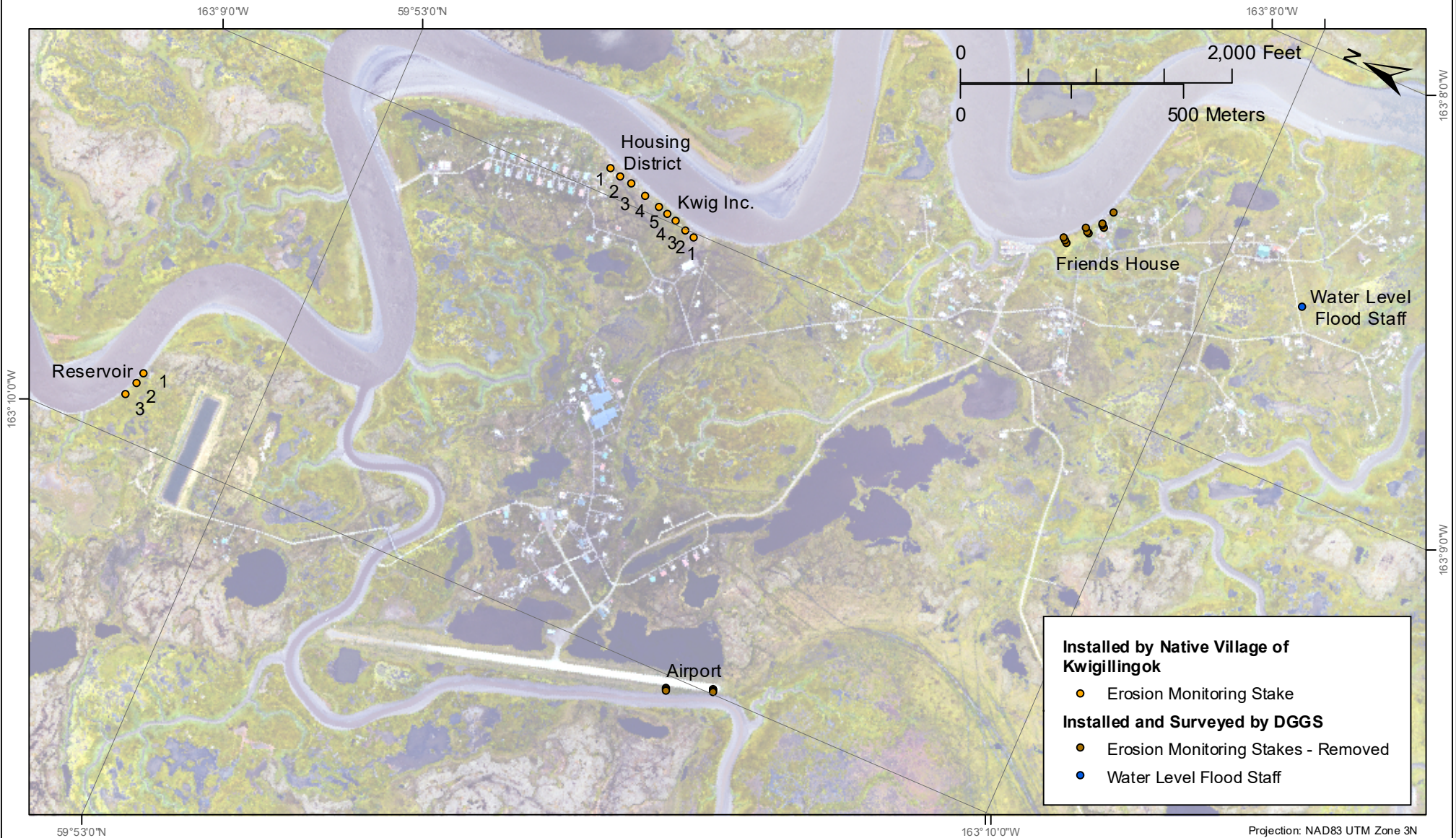


Erosion Monitoring Site

Kwigillingok, Alaska

LAST UPDATED 2019



Projection: NAD83 UTM Zone 3N
 Orthoimagery available from elevation.alaska.gov



STATE OF ALASKA
 DEPARTMENT OF NATURAL RESOURCES
 DIVISION OF GEOLOGICAL & GEOPHYSICAL SURVEYS

The State of Alaska makes no expressed or implied warranties (including warranties for merchantability and fitness) with respect to the character, functions, or capabilities of the electronic data or products or their appropriateness for any user's purposes. In no event will the State of Alaska be liable for any incidental, indirect, special, consequential, or other damages suffered by the user or any other person or entity whether from the use of the electronic services or products or any failure thereof or otherwise. In no event will the State of Alaska's liability to the Requestor or anyone else exceed the fee paid for the electronic service or product.
 website: dggs.alaska.gov

DGGS conducts baseline assessments of flooding and erosion in collaboration with Alaska communities. Erosion and flood monitoring equipment were installed at Kwigillingok, Alaska in June of 2017 by DGGS, the Native Village of Kwigillingok, and the Alaska Institute for Justice. Site equipment including erosion monitoring stakes, a time-lapse camera, and water level flood staff were surveyed using GNSS-GPS and are shown in this map. After installation, the erosion monitoring stakes and time-lapse camera were removed. Stakes were placed at new locations including the Reservoir, Housing District, and Kwig Inc. sites. The new installation and monitoring has been conducted by the Native Village of Kwigillingok.

This work was funded through the Alaska Institute for Justice and in-part by the State of Alaska.